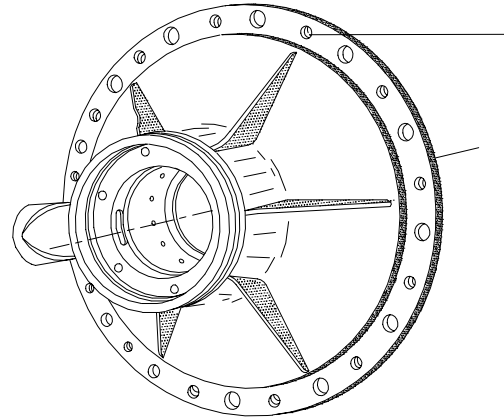


Product Repair Bulletin

P/N 966578

Bearing Housing Assembly

NHA: GTCP85 Series APU



OEM Manual Repairs

Repairs for OEM Manual 49-21-73:

Procure/install H2RA205SC5 flange insert.
Procure/install S9008A112 pin. (966578-11/-13)*
Procure deswirl vane.
Weld/dress cracks in strut area.
Weld cracks in surface M.
Weld cracks in surface N.
Metallize diameter D/AB.
Metallize diameter B.
Metallize diameter W.
Metallize surface P.
Metallize surface R.
Machine diameter D/AB.

Machine diameter C/AF.
Machine diameter B.
Machine diameter W.
Machine surface P.
Machine surface R.
Machine surface M.
Machine surface N.
Machine diameter AD.
Machine diameter AH.
Machine scallops. (966578-12/13)
Grind sleeve I.D. (diameter F).
Grind sleeve I.D. (diameter F) - oversize.

Repairs for Service Bulletins:

Install 2 deswirl vanes
Converts 696659-120/-160 to 966578-9/-11 per S/B 49-3787

Additional FAA Approved Repairs

Repairs for Britt Metal Major Repair 9001161:

Fabricate/Install -1 Sleeve.	Fabricate/Install -5 Sleeve.
Fabricate/Install -2 Sleeve.	Fabricate/Install -6 Sleeve.
Fabricate/Install -3 Sleeve.	Fabricate/install -100 Ring.
Fabricate/Install -4 Sleeve.	Metal fuse sleeve bore.

Repairs for Britt Metal Major Repair 9101081:

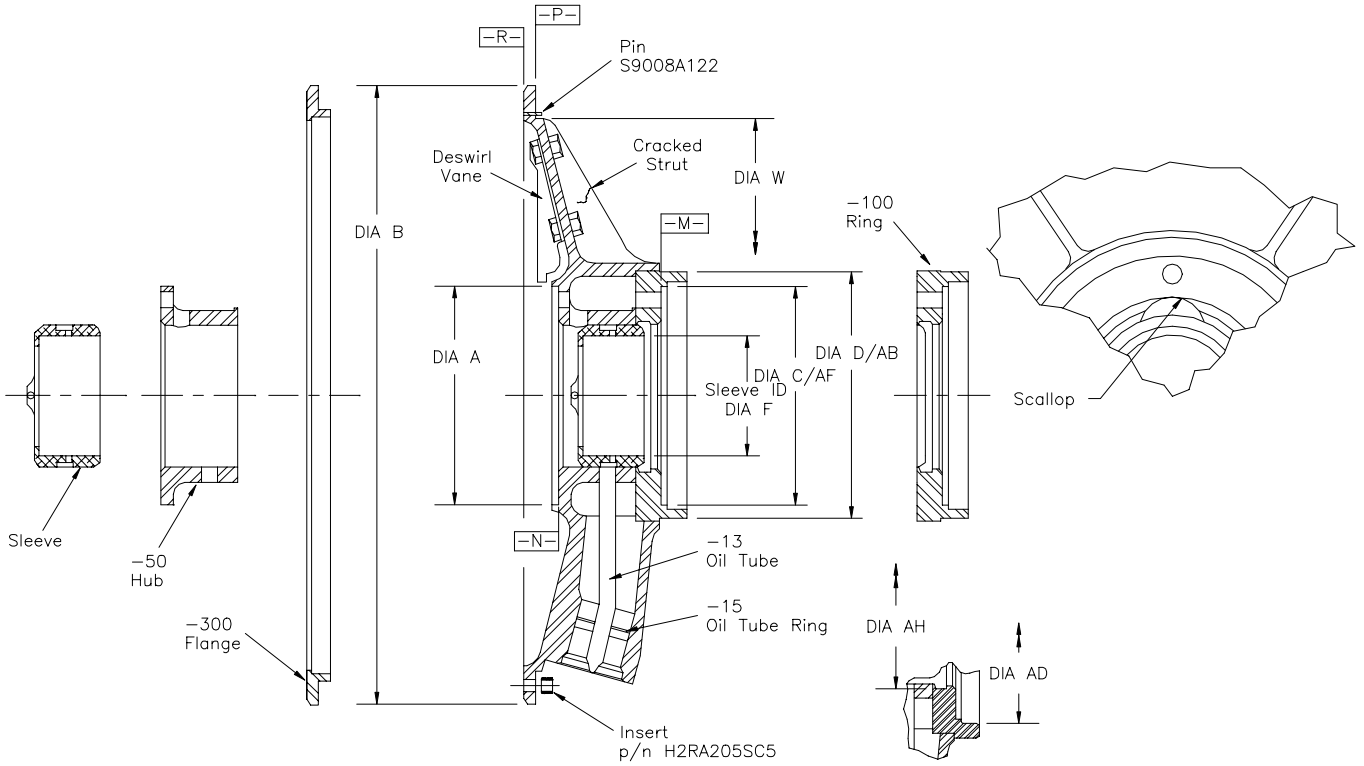
Fabricate/install -13 Oil Tube and -15 Oil Tube Ring
Fabricate/install -300 Flange.

Repairs for Britt Metal Major Repair 9106101:

Fabricate/install -50 Hub.
Machine diameter A.
Fabricate/install deswirl vane(s)

Product Repair Bulletin

P/N 966578
Bearing Housing Assembly



**Bearing Housing
 Feature Reference Chart**

P/N	No Vanes	2 Vanes	12 Vanes	No Piston Ring Groove	Scallops	No Scallops	Flange Pin	No Flange Pin	Body Holes	No Body Holes
696659-120	X			X		X		X		X
696659-160	X			X		X	X			X
966578-9		X		X		X		X		X
966578-11		X		X		X	X			X
966578-12		X		X	X			X		X
966578-13		X		X	X		X			X

