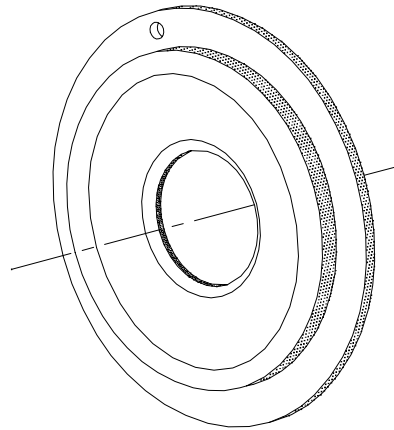


## Product Repair Bulletin

P/N 379727/966583

### Turbine Wheel Shroud

NHA: GTCP85 Series APU



### OEM Manual Repairs

#### Repairs for OEM Manual 49-21-73:

- Metallize diameter A.
- Metallize diameter B.
- Machine surface E.
- Machine surface F.
- Machine diameter A.
- Machine diameter B.
- Drill/tap new bolt hole(s).
- Procure/install 1/4-28x3/8 bolt hole insert.
- Machine new locating holes.

#### Repair for Service Bulletins:

- Machine per S/B 49-3688.
- Converts 379727 to 966583.*

### Additional FAA Approved Repairs

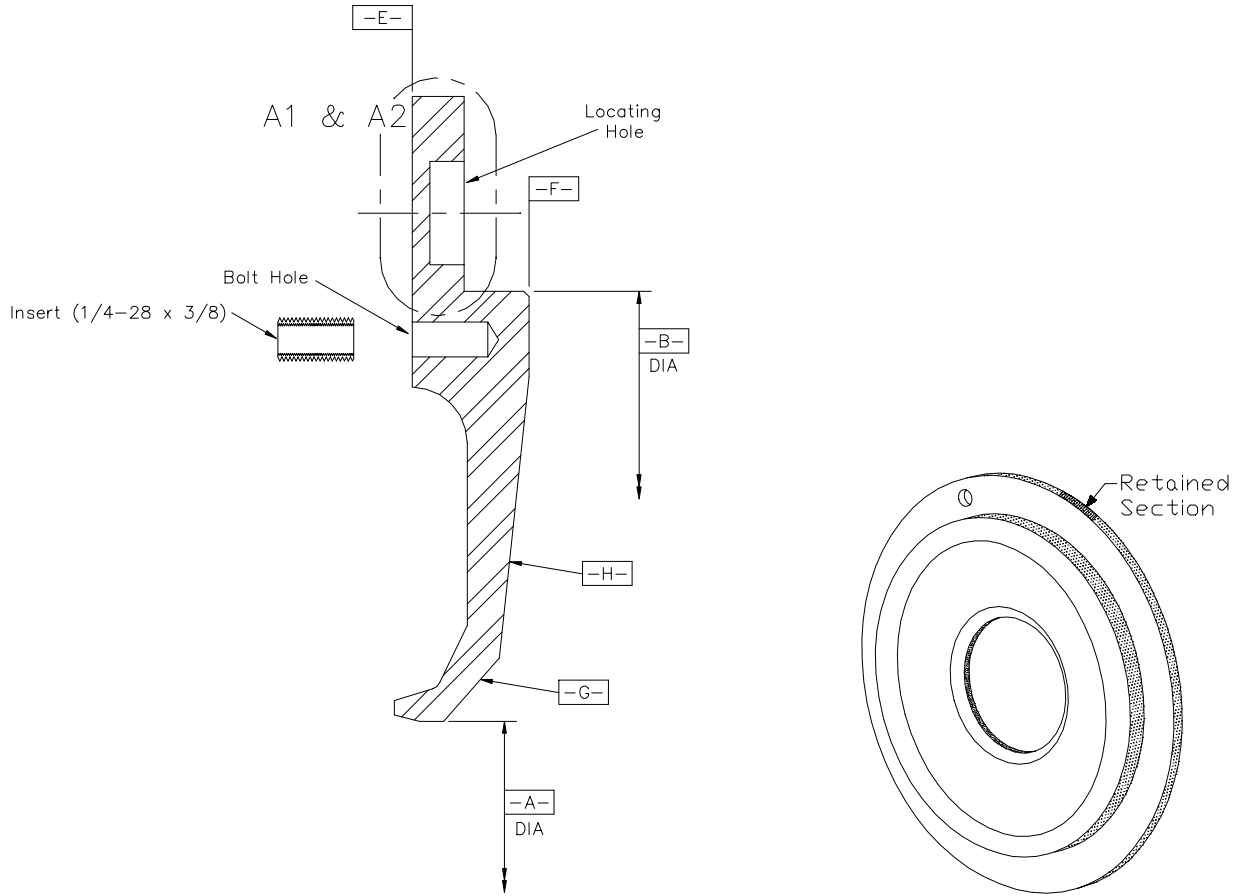
#### Repair for Britt Metal Major Repair 9107247:

- Metal fuse surface D.
- Metal fuse surface E.
- Metal fuse surface F.
- Metal fuse surface G.
- Metal fuse surface H.
- Metal fuse diameter A.
- Metal fuse diameter B.
- Machine surface D.
- Machine surface G.
- Machine surface H.
- Weld restore damaged bolt holes.
- Heat treat and age shroud.
- Fabricate/install -30 Ring

# Product Repair Bulletin

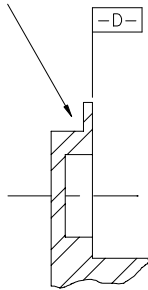
P/N 379727/966583

## Turbine Wheel Shroud

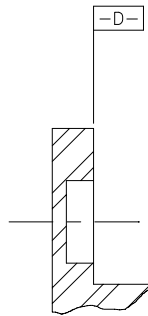


-30 RING

Machined Per  
S/B GTC-85-49-3688



VIEW A1  
Converts 379727  
to 966583



VIEW A2

